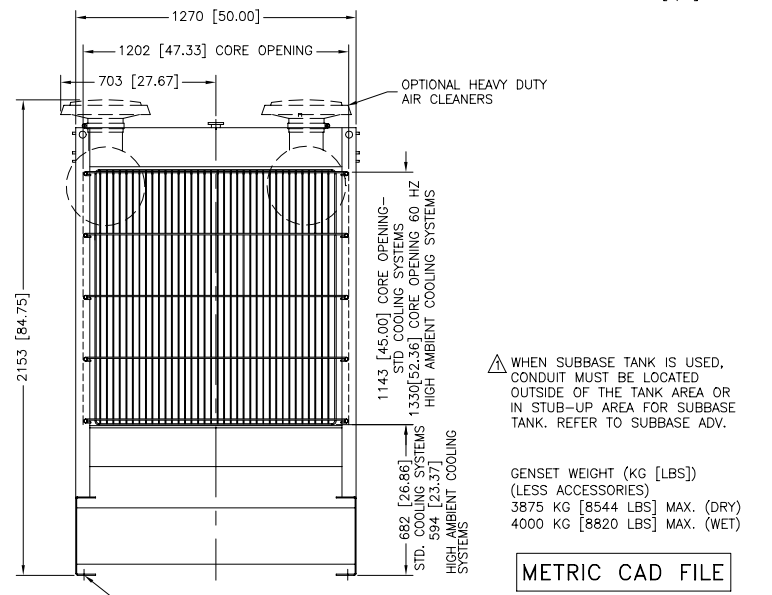


**INSTALLATION NOTE**  
 IF SUBBASE FUEL TANK AND/OR SOUND HOUSING IS USED, REFER TO SUBBASE FUEL TANK ADV TO DETERMINE MOUNTING LOCATIONS.

REV	DATE	REVISION	BY
M	5-8-03	SEE SHEET 6 OF 7 [89577]	RAC
N	2-3-05	(B.C-3) HEAVY DUTY A.C. UPDATED, 714 [28.13] REMOVED & 703 RLD [27.67] WAS 755 [29.70] [74543]	RLD
P	2-8-05	SEE SHEET 7 OF 7 [74286]	RLD

MODEL	ALTERNATOR FRAME	CONNECTION
450-50HZ	5M4024	10 LEAD
450-50HZ	5M4027	12 LEAD
450-50HZ	5M4028	10 LEAD
450-60HZ	5M4024	10 LEAD
450-60HZ	5M4027	12 LEAD
450-60HZ	5M4028	10 LEAD
450-60HZ	5M4160	4 LEAD
450-60HZ	5M4162	4 LEAD
450-60HZ	5M4270	4 LEAD
450-60HZ	5M4272	4 LEAD
500-60HZ	5M4027	12 LEAD
500-60HZ	5M4028	10 LEAD
500-60HZ	5M4030	10 LEAD
500-60HZ	5M4030	10 LEAD
500-60HZ	5M4162	4 LEAD
500-60HZ	5M4164	4 LEAD
500-60HZ	5M4270	4 LEAD
500-60HZ	5M4272	4 LEAD

ALL LEAD CONNECTIONS USE 10 MM [3/8] HARDWARE.



△ WHEN SUBBASE TANK IS USED, CONDUIT MUST BE LOCATED OUTSIDE OF THE TANK AREA OR IN STUB-UP AREA FOR SUBBASE TANK. REFER TO SUBBASE ADV.

GENSET WEIGHT (KG [LBS])  
 (LESS ACCESSORIES)  
 3875 KG [8544 LBS] MAX. (DRY)  
 4000 KG [8820 LBS] MAX. (WET)

METRIC CAD FILE

UNLESS OTHERWISE SPECIFIED:  
 1) DIMENSIONS ARE IN MILLIMETERS  
 2) TOLERANCES ARE:  
 FRACTIONS SURFACE FINISH  
 DECIMALS MAX.  
 ANGLES ±

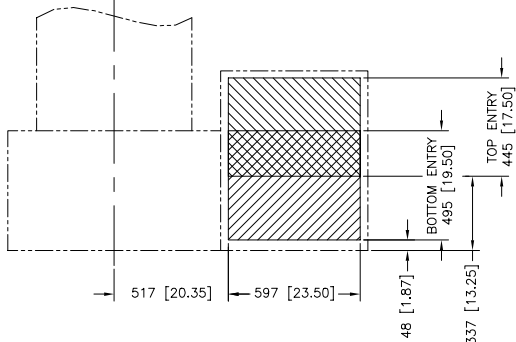
APPROVED: [Signature] DATE: 10-13-98  
 DRAWN: JRS  
 CHECKED: JAS  
 APPROVED: JAS

**KOHLER CO.**  
 POWER SYSTEMS, KOHLER, WI 53044 U.S.A.  
 THIS DRAWING IS DESIGN AND DETAIL OF KOHLER CO. PROPERTY AND  
 MUST NOT BE USED WITHOUT THE CONSENT OF KOHLER CO. WORK  
 ALL RIGHTS OF DESIGN OR INVENTION ARE RESERVED.

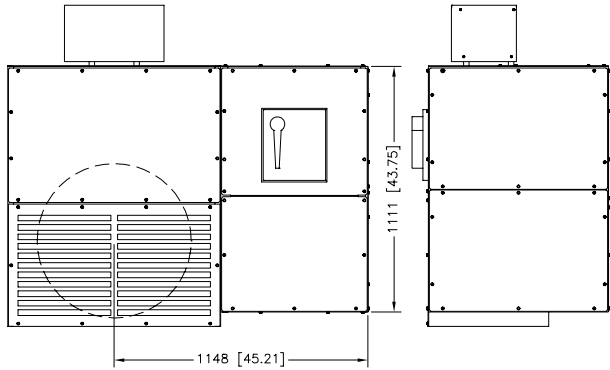
TITLE: **DIMENSION PRINT**  
 650 MODEL 50/60HZ, AND 500 MODEL 60HZ 8V SERIES 2000 RECONNECTABLE, 380V AND 600V ALTERNATORS WITH STANDARD RADIATOR

SCALE: 0.1X  
 SHEET: 1-7  
 FILE NO.: ADV6459A.DWG  
 PLOTTED DATE: ADV-6459

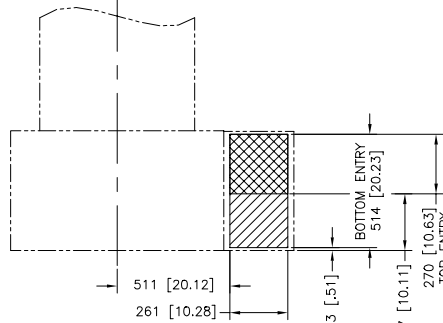
NOTE: DIMENSIONS IN [ ] ARE IN ENGLISH INCH EQUIVALENTS.



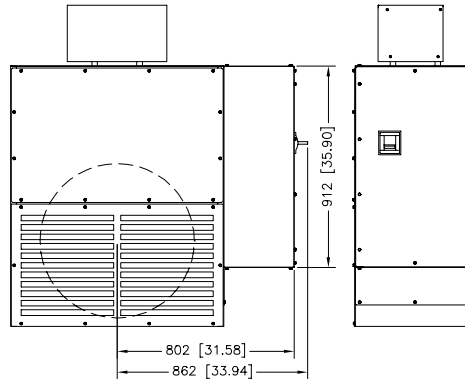
NOTE: CONSULT FACTORY FOR OTHER ENTRY AREAS.



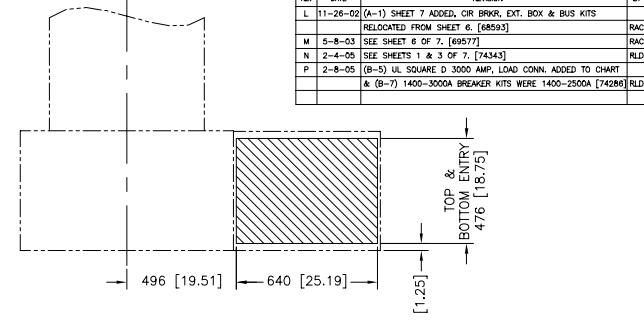
TYPE 1  
SERIES 2000  
1400-3000A BREAKER KITS  
AND UL SQUARE D 1200A W/GFI



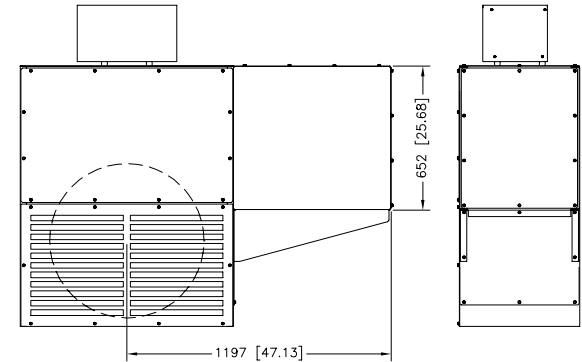
NOTE: CONSULT FACTORY FOR OTHER ENTRY AREAS.



TYPE 2  
SERIES 2000  
400-1200A BREAKER KITS  
(AVAILABLE AS STANDARD ON LEAD UNITS ONLY, SEE SHEET 1)



NOTE: CONSULT FACTORY FOR OTHER ENTRY AREAS.

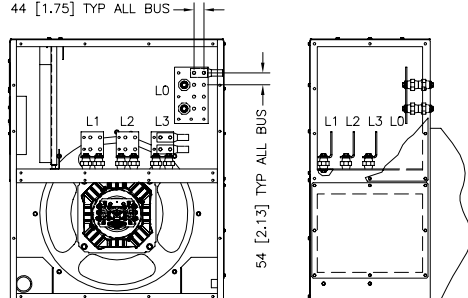


SERIES 2000 EXTENSION BOX KIT  
(LOAD CONNECTIONS ARE DEPENDENT ON ALTERNATOR FRAME, SEE SHEET 1)

REV	DATE	REVISION	BY
L	11-26-02	(A-1) SHEET 7 ADDED, CIR BRKR, EXT. BOX & BUS KITS RELOCATED FROM SHEET 6. [68593]	RAC
M	5-8-03	SEE SHEET 6 OF 7. [69577]	RAC
N	2-4-05	SIZE SHEETS 1 & 3 OF 7. [74343]	RLD
P	2-8-05	(B-5) UL SQUARE D 3000 AMP. LOAD CONN. ADDED TO CHART & (B-7) 1400-3000A BREAKER KITS WERE 1400-2500A [74286] RLD	RLD

BUS KIT BUS CONNECTIONS (BASED ON 750MCM 2-HOLE LUGS) (LUGS NOT INCLUDED)	
KIT AMPS	CABLES PER PHASE
1000	4
1500	4
2250	6
3000	8

NEUTRALS FOR ALL BUS KITS SIZED FOR MAX (8) 750MCM 2-HOLE COMPRESSION LUGS (NOT INCLUDED) (SEE DETAIL BELOW)  
44 [1.75] TYP ALL BUS



SERIES 2000 BUS KITS 1000-3000A  
(1000A SHOWN)

CIRCUIT BREAKER KIT LOAD CONNECTIONS: TYPE 1				QTY PER
CIRCUIT BREAKER	TRIP AMPS	MECHANICAL CONNECTOR (INCLUDED FOR A, B & C PHASE)	PHASE	
UL SQUARE D	1200-2000	(1) #4-600MCM OR (2) 1/0-250MCM		6
UL SQUARE D	2500	(1) 1/0-750MCM OR (2) 1/0-300MCM		8
UL SQUARE D	3000	(1) #4-600MCM OR (2) 1/0-250MCM		8
IEC MERLIN GERIN	1400-2000	(1) #2-600MCM		6
IEC MERLIN GERIN	2500	(1) #2-600MCM		8

NEUTRALS FOR ABOVE UNITS SIZED FOR MAX (8) 750MCM 2-HOLE COMPRESSION LUGS (NOT INCLUDED)  
(SEE BUS KIT DETAIL FOR TYPICAL LUG HOLE SPACING)

CIRCUIT BREAKER KIT LOAD CONNECTIONS: TYPE 2				QTY PER
CIRCUIT BREAKER	TRIP AMPS	MECHANICAL CONNECTOR (INCLUDED FOR A, B & C PHASE)	PHASE	
UL SQUARE D	400	(1) #1-600MCM OR (2) #1-250MCM		1
UL SQUARE D	450-1000	(1) 3/0-500MCM		3
UL SQUARE D	1200	(1) 1/0-350MCM		4
IEC MERLIN GERIN	400-600	(1) 3/0-500MCM		2
IEC MERLIN GERIN	800-1200	(1) 2/0-600MCM		4

NEUTRALS FOR ABOVE UNITS SIZED FOR MAX (4) 750MCM 2-HOLE COMPRESSION LUGS (NOT INCLUDED)  
(SEE BUS KIT DETAIL FOR TYPICAL LUG HOLE SPACING)

NOTE: BREAKER BOXES BASED ON 500MCM WIRE BENDING & GUTTER SPACE PER NEC 1999.

NOTE: DIMENSIONS IN [ ] ARE IN ENGLISH INCH EQUIVALENTS.

METRIC CAD FILE

UNLESS OTHERWISE SPECIFIED:  
1) DIMENSIONS ARE IN MILLIMETERS  
2) TOLERANCES ARE:  
L & S SURFACE FINISH  
F ± .3  
M ± .5  
H ± .8  
ANGLES ±

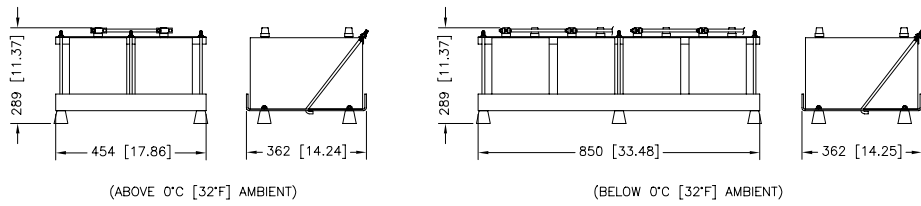
**KOHLER CO.**  
POWER SYSTEMS, KOHLER, WI 53044 U.S.A.  
THIS DRAWING IS DESIGN AND DETAIL. IS UNDER CO. PROPERTY AND  
SHOULD NOT BE USED WITHOUT THE WRITTEN PERMISSION OF KOHLER CO. WORK  
ALL RIGHTS OF DESIGN OR INVENTION ARE RESERVED.

**DIMENSION PRINT**

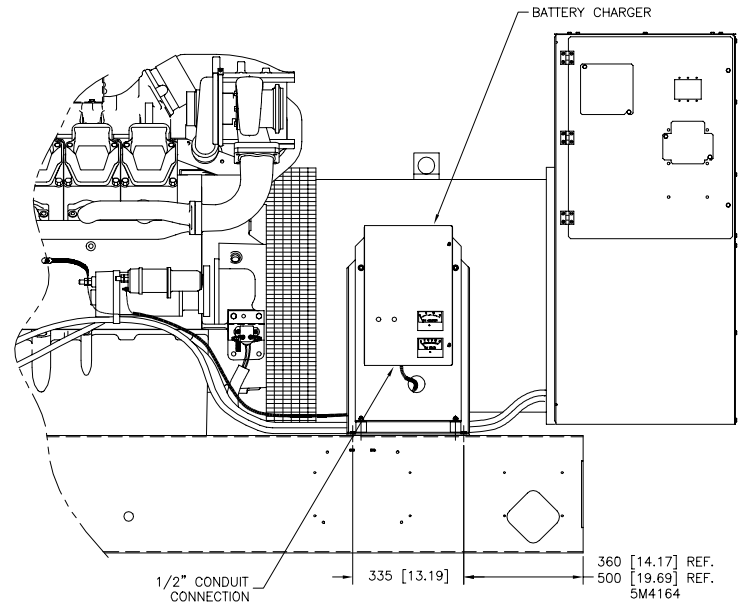
DESIGNED BY	RAC	DATE	11-26-02
CHECKED BY	JIS	DATE	1-10-03
APPROVED BY	KDW	DATE	1-15-03

SCALE: .1  
DWG NO: ADV6459G.DWG  
SHEET: 7-7  
REV. NO: ADV-6459  
PLOTTED DATE: 11-15-03

REV	DATE	REVISION	BY
K	7-1-02	SEE SHEET 1 OF 6 [67528]	DFS
L	11-26-02	(C-5) BATTERY & BATTERY RACK RELOCATED FROM SHT. 5, (A-5) BATTERY CHARGER ADDED, CIR. BREAK, EXT. BOX & BUS KITS MOVED TO SHT. 7, (A-1) SHT. 6-7 WAS 6-6. [68593]	RAC
M	5-8-03	(A-4) 360 WAS 387 & 500 WAS 552, (A-5) 335 WAS 285.[69577]	RAC
N	2-4-05	SEE SHEETS 1 & 3 OF 7 [74343]	RLD
P	2-8-05	SEE SHEET 7 OF 7 [74286]	RLD



BATTERY AND BATTERY RACK



BATTERY CHARGER

METRIC CAD FILE

NOTE: DIMENSIONS IN [ ] ARE IN ENGLISH INCH EQUIVALENTS.

450 MODEL 50/60Hz, AND 500 MODEL 60Hz  
8V SERIES 2000  
RECONNECTABLE, 380V AND 600V ALTERNATORS  
WITH STANDARD RADIATOR

**KOHLER CO.**  
POWER SYSTEMS, KOHLER, WI 53044 U.S.A.  
THIS DRAWING IS DESIGN AND TRADE SE PROPERTY AND  
SHOULD NOT BE USED WITHOUT THE CONSENT OF KOHLER CO. WORK  
ALL RIGHTS OF DESIGN OR INVENTION ARE RESERVED.

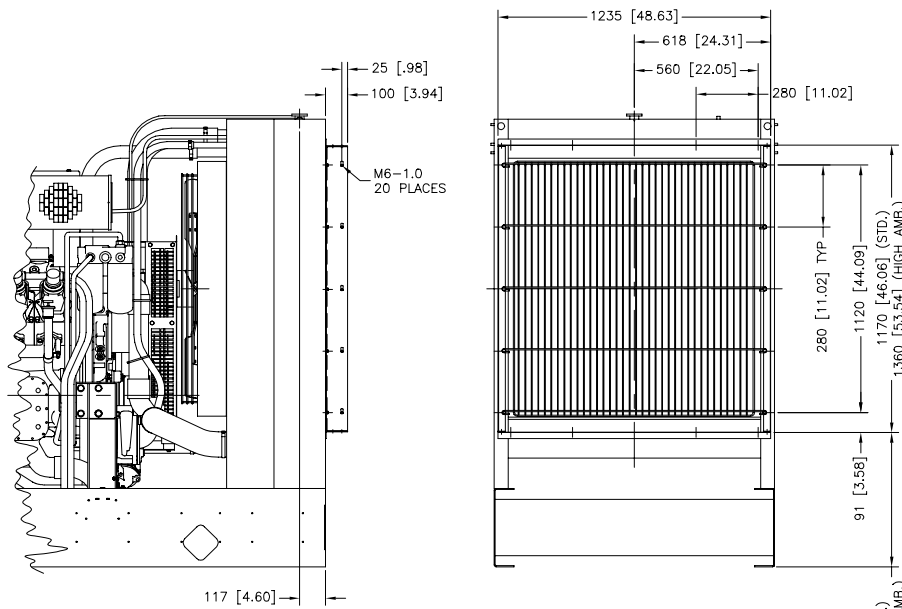
**TITLE**  
DIMENSION PRINT

APPROVALS	DATE
DESIGN	SFR 3-4-99
CHECKED	JIS 3-5-99
APPROVED	JAS 3-5-99

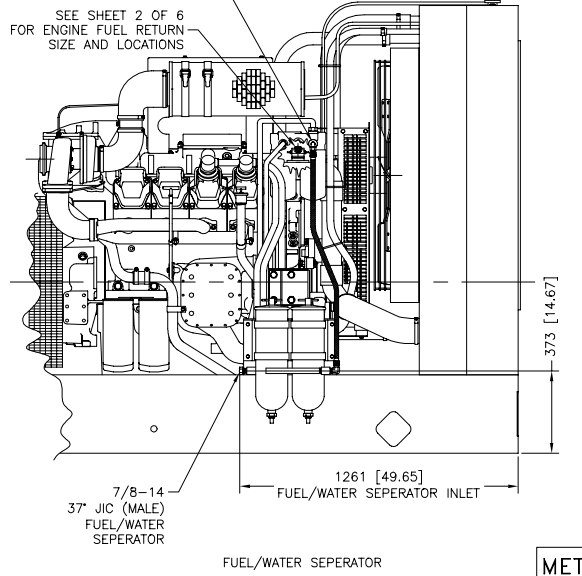
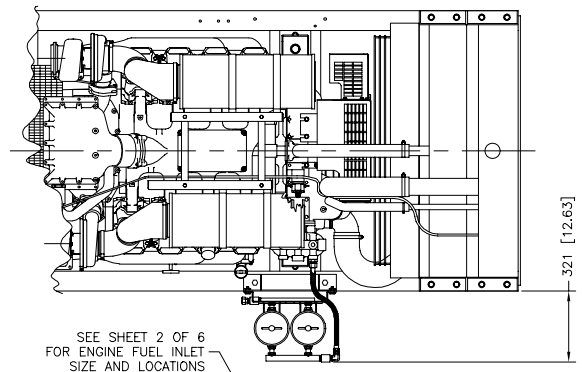
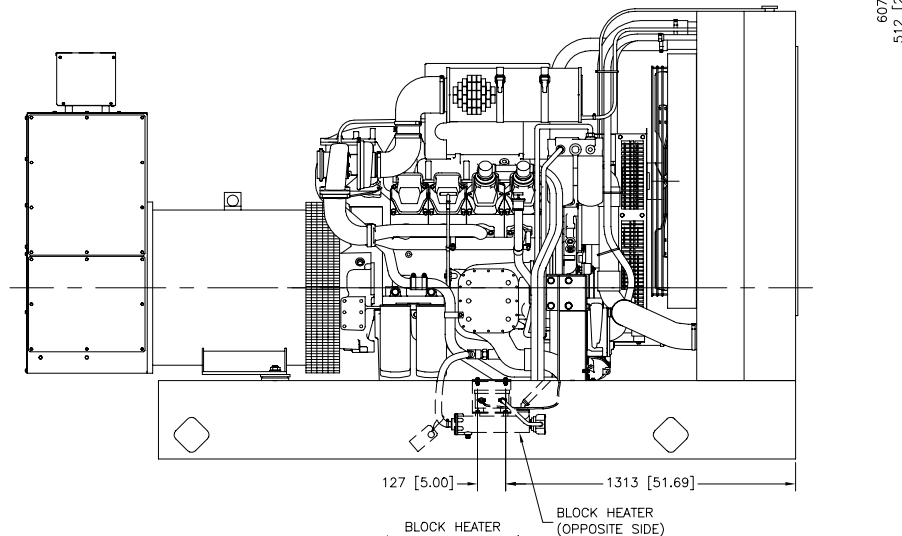
SCALE: 0.15X  
DWG NO: ADV6459F.DWG  
SHEET: 6-7  
REV. NO:  
PLOTTED DATE: 1

ADV-6459

REV	DATE	REVISION	BY
J	1-4-02	SEE SHEET 4-6 [86277]	LRH
K	7-1-02	SEE SHEET 1 OF 6 [67526]	DFS
L	11-26-02	(A-2) BATTERY & RACK DETAILS RELOCATED TO SHIT. 6, (A-1)	
		SHIT 5-7 WAS 5-6. [88933]	
M	5-8-03	SEE SHEET 6 OF 7 [89577]	RAC
N	2-4-05	SEE SHEETS 1 & 3 OF 7 [74343]	RLD
P	2-8-05	SEE SHEET 7 OF 7 [74286]	RLD



STANDARD RADIATOR DUCT FLANGE



FUEL/WATER SEPARATOR

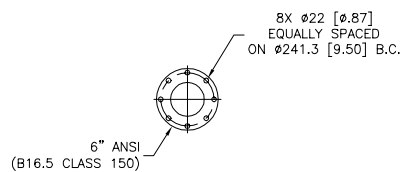
METRIC CAD FILE

UNLESS OTHERWISE SPECIFIED:		DATE		TITLE	
1) DIMENSIONS ARE IN MILLIMETERS		APPROVED	DATE	DIMENSION PRINT	
2) TOLERANCES ARE:		DATE			
1/4" ±	SURFACE FINISH				
1/8" ±	MAX.				
1/16" ±	ANGLES ±				
DRAWN		DATE			
SPR	3-4-99				
CHECKED	JIS	3-5-99			
APPROVED	JAS	3-5-99			
SCALE		0.1X	DOC NO.	ADV6459E.DWG	SHEET 5-7
PLOTTED DATE				ADV-6459	D 0

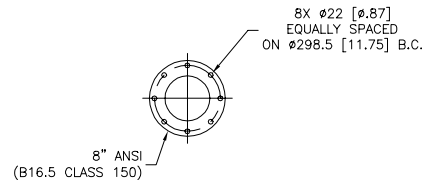
450 MODEL 50/60Hz, AND 500 MODEL 60Hz  
8V SERIES 2000  
RECONNECTABLE, 380V AND 600V ALTERNATORS  
WITH STANDARD RADIATOR

NOTE: DIMENSIONS IN [ ] ARE IN ENGLISH INCH EQUIVALENTS.

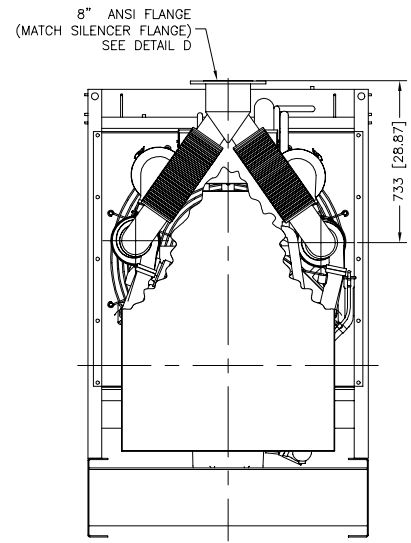
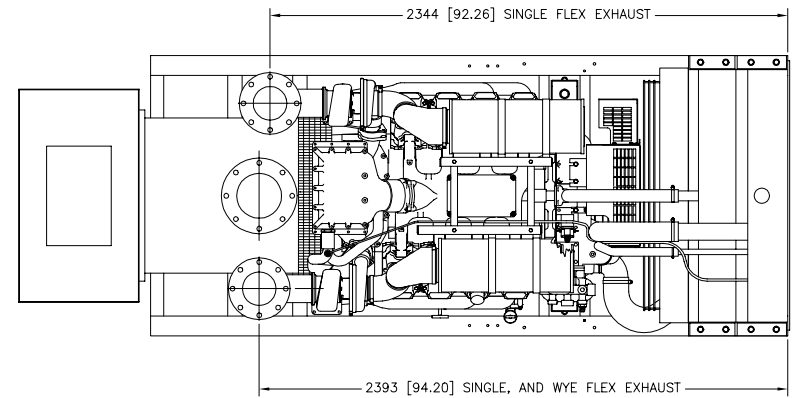
REV	DATE	REVISION	BY
J	1-2-02	(C-8),(C-9) DETAIL E, 10" ANSI FLANGE REMOVED. [66277]	LRH
K	7-1-02	SEE SHEET 1 OF 6 [67526]	DFS
L	11-28-02	SEE SHEETS 1, 5 & 6, (A-1) SH1 4-7 WAS 4-6. [68593]	RAC
M	5-8-03	SEE SHEET 6 OF 7 [69577]	RAC
N	2-4-05	SEE SHEETS 1 & 3 OF 7 [74343]	RLD
P	2-8-05	SEE SHEET 7 OF 7 [74286]	RLD



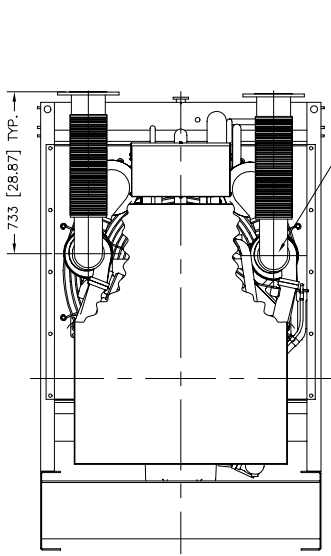
DETAIL C



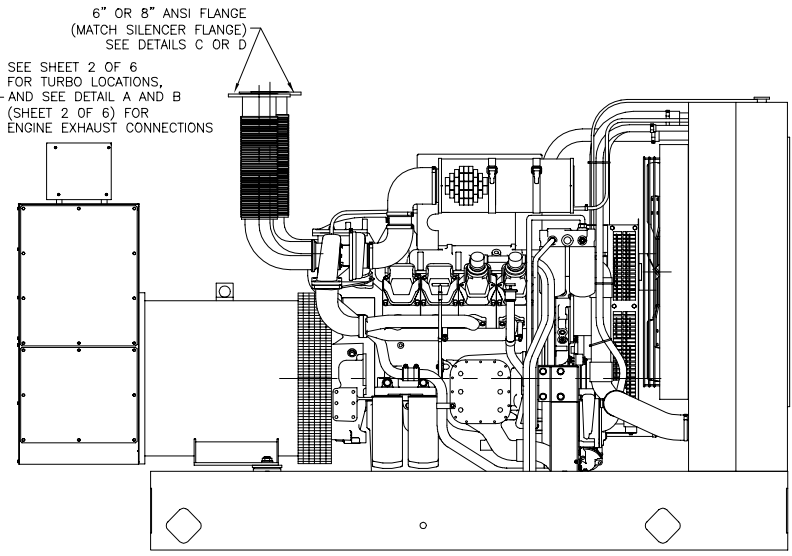
DETAIL D



WYE FLEX EXHAUST  
(1 REQUIRED)



SINGLE FLEX EXHAUST  
(2 REQUIRED)



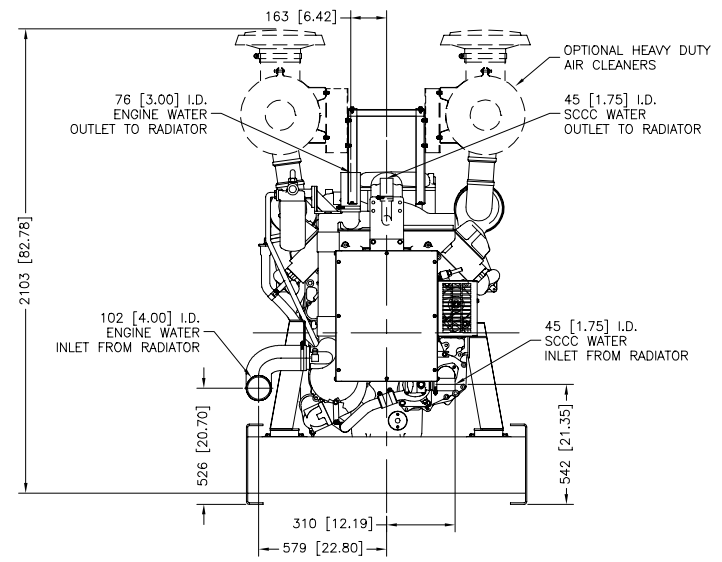
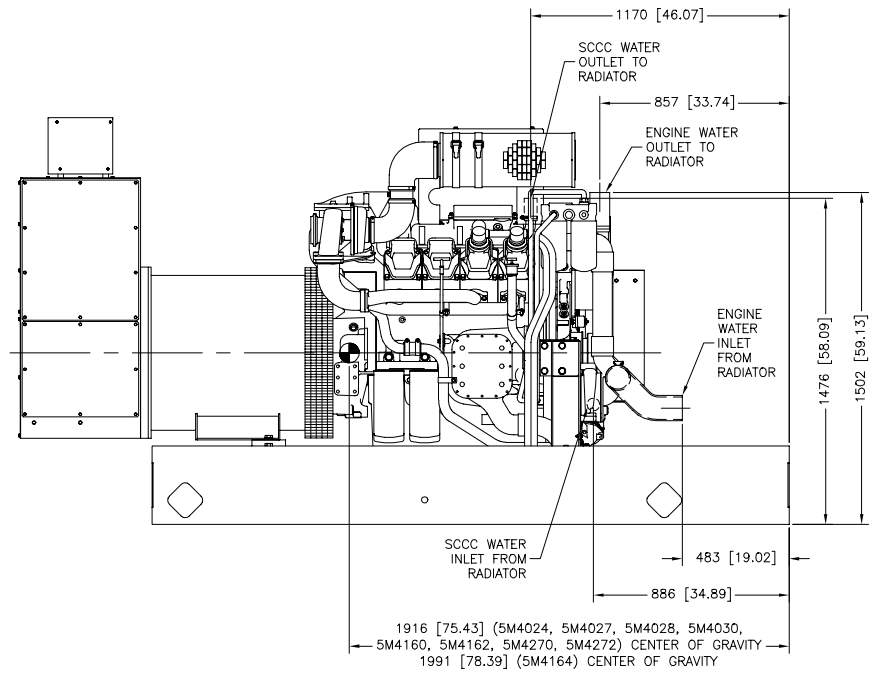
METRIC CAD FILE

UNLESS OTHERWISE SPECIFIED: 1) DIMENSIONS ARE IN MILLIMETERS 2) TOLERANCES ARE: L & T ± SURFACE FINISH H ± MAX. ANGLES ±		<b>KOHLER CO.</b> POWER SYSTEMS, KOHLER, WI 53044 U.S.A. THIS DRAWING IS DESIGN AND TRADE SE PROPERTY AND SHOULD NOT BE USED WITHOUT THE CONSENT OF KOHLER CO. WORK ALL RIGHTS OF DESIGN OR INVENTION ARE RESERVED.	
DRAWN: SFR		DATE: 3-4-99	
CHECKED: JIS		DATE: 3-5-99	
APPROVED: JAS		DATE: 3-5-99	
TITLE: DIMENSION PRINT		SHEET: 4-7	
PROJECT: ADV6459D.DWG		DRAWN: 0.1X	
PLOTTED DATE: ADV-6459		D	

NOTE: DIMENSIONS IN [ ] ARE IN ENGLISH INCH EQUIVALENTS.

450 MODEL 50/60Hz, AND 500 MODEL 60Hz  
8V SERIES 2000  
RECONNECTABLE, 380V AND 600V ALTERNATORS  
WITH STANDARD RADIATOR

REV	DATE	REVISION	BY
J	1-4-02	SEE SHEET 4-6 [66277]	LRH
K	7-1-02	SEE SHEET 1 OF 6 [67506]	DRS
L	11-26-02	SEE SHEET 1, 5 & 6, (A-1) SHT 3-7 WAS 3-6, [68593]	RAC
M	5-8-03	SEE SHEET 6 OF 7 [69377]	RAC
N	2-3-05	(C-3) HEAVY DUTY A.C. VIEW UPDATED [74343]	RLD
P	2-8-05	SEE SHEET 7 OF 7 [74286]	RLD



REMOTE RADIATOR

GENSET WEIGHTS: (KG [LBS])  
 (LESS ACCESSORIES)  
 3399 KG [7494] MAX. (DRY)  
 3411 KG [7521] MAX. (WET)

METRIC CAD FILE

450 MODEL 50/60Hz, AND 500 MODEL 60Hz  
 SV SERIES 2000  
 RECONNECTABLE, 380V AND 600V ALTERNATORS  
 WITH REMOTE RADIATOR

UNLESS OTHERWISE SPECIFIED:  
 1) DIMENSIONS ARE IN MILLIMETERS  
 2) TOLERANCES ARE:  
 FRACTIONS SURFACE FINISH  
 X.X ± MAX.  
 X ± MAX.  
 ANGLES ±

THIS AREA PROTECTIVE

APPROVED	DATE	TITLE
DRW	3-3-99	3-7
CHEK	3-5-99	SCALE 0.1X
APPROV	3-5-99	DWG NO. ADV6459C.DWG

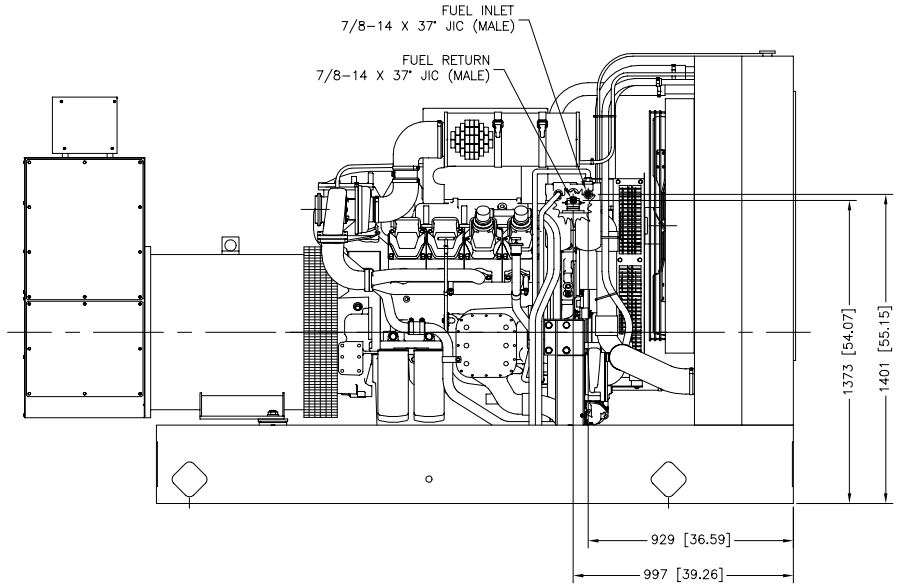
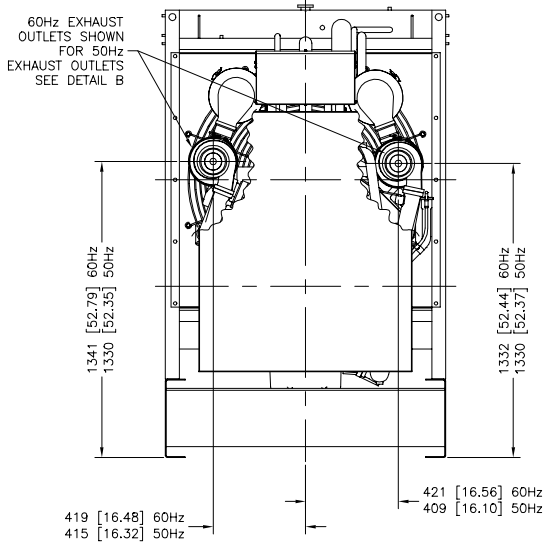
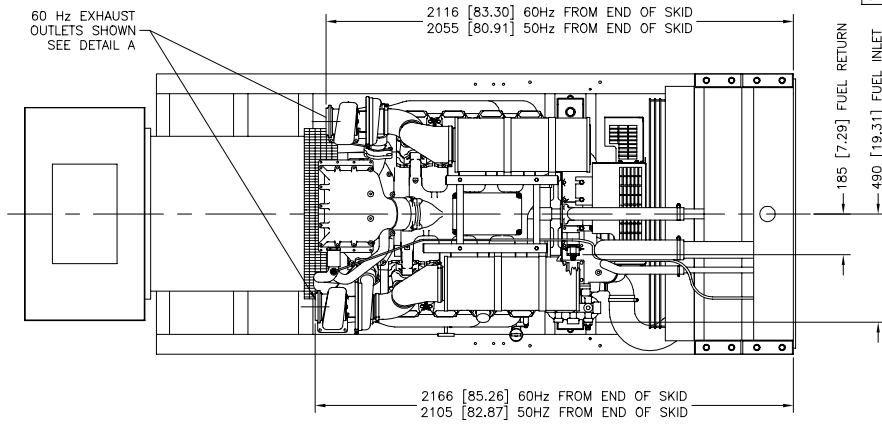
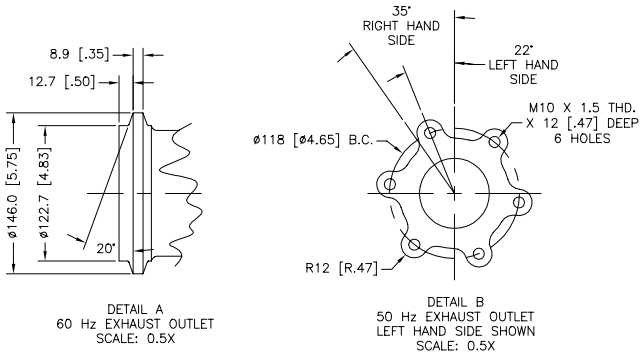
POWER SYSTEMS, KOHLER, WI 53044 U.S.A.  
 THIS DRAWING IS DESIGN AND TRADE SE PROPERTY AND  
 MUST NOT BE USED WITHOUT THE CONSENT OF KOHLER CO. WORK  
 ALL RIGHTS OF DESIGN OR PATENT ARE RESERVED.

**KOHLER CO.**  
**ADV-6459**

PLOTTED DATE

NOTE: DIMENSIONS IN [ ] ARE IN ENGLISH INCH EQUIVALENTS.

REV	DATE	REVISION	BY
H	12-12-01	SEE SHEET 1 OF 6 [86181]	RAC
J	1-4-02	SEE SHEET 4-6 [86277]	LRH
K	7-1-02	SEE SHEET 1 OF 6 [87536]	DFB
L	11-26-02	SEE SHEET 1, 5 & 6, (4-1) SHT. 2-7 WAS 2-6. [88593]	RAC
M	5-8-03	SEE SHEET 6 OF 7 [89577]	RAC
N	2-4-05	SEE SHEETS 1 & 3 OF 7 [74343]	RJD
P	2-8-05	SEE SHEET 7 OF 7 [74286]	RJD



METRIC CAD FILE

UNLESS OTHERWISE SPECIFIED: 1) DIMENSIONS ARE IN MILLIMETERS 2) TOLERANCES ARE: L & T ± .15 R ± .15 ANGLES ± .5		<b>KOHLER CO.</b> POWER SYSTEMS, KOHLER, WI 53044 U.S.A. THIS DRAWING IS DESIGN AND DRAWING BY KOHLER CO. PROPERTY AND MUST NOT BE USED WITHOUT THE CONSENT OF KOHLER CO. WORK ALL RIGHTS OF DESIGN OR INVENTION ARE RESERVED.	
TITLE: DIMENSION PRINT APPROVED: [Signature] DATE: 12-8-98		SHEET: 2-7 DWG NO: ADV6459B.DWG REV. NO: 12-17-98 PLOTTED DATE: 12-17-98	

450 MODEL 50/60Hz, AND 500 MODEL 60Hz  
BV SERIES 2000  
RECONNECTABLE, 380V AND 600V ALTERNATORS  
WITH STANDARD RADIATOR

NOTE: DIMENSIONS IN [ ] ARE IN ENGLISH INCH EQUIVALENTS.